

ART ■ ART ■ ART

*Visit the quaint villages,  
stroll the galleries,  
meet the artists,  
revel in the festivities,  
enjoy our fresh food,  
fresh air and rural charm*

the  
art lover's  
GUIDE TO  
SOUTHERN  
VERMONT

More info at toll free 1-877-VTSBEST or

**SOUTHERNVERMONT.COM**  
*Your Vermont*

# 2

## CALENDAR OF *art* FESTIVALS & STUDIO TOURS

*Southern Vermont celebrates the arts with a unique mix of cutting-edge innovations and country traditions. So come chat with the artists, breathe the fresh air, tour the scenic back roads and enjoy the old-style hospitality.*

### FESTIVALS & EVENTS

Check the Gallery Walks section for art festivities that happen monthly.



1

### JUNE

#### 6th Annual Art Extravaganza

**Sun, June 24, 4 pm, Boccelli's on the Canal, Bellows Falls, 802-463-3252, ramp-vt.org**

Enjoy refreshments while you browse art by 80 regional artists and await your chance to win your favorite piece. You can preview the pieces at Boccelli's starting on June 15, and purchase tickets in advance by calling the number above.

### JULY

#### Outdoor Fine Art Show

**Sat & Sun, July 21-22, 10-5, 10 West Main Street, Wilmington**  
Oil, watercolor, pastels & botanicals, at the Crafts Inn. Prints and originals available.

#### Artists of Jamaica Exhibition

**Sun, July 28, 11-5, Jamaica Town Hall**

The newly restored town hall will feature work by local painters, designers, photographers and more. Stay and have fun at Jamaica's Old Home Day Celebration, with entertainment, games, food, music, vendors and a parade.

### AUGUST

#### Outdoor Fine Art Show

**Sat & Sun, Aug 25-26, 10-5, 10 West Main Street, Wilmington**  
Oil, watercolor, pastels & botanicals, at the Crafts Inn. Prints and originals available.

#### Southern Vermont Art & Craft Festival

**Fri, Aug 3-Sun, Aug 5, 10-5, River Road, Hildene Meadows, Manchester, 802-362-2100, craftproducers.com**

175 juried artists and artisans under Camelot tents at the Hildene Estate. Great food, entertainment and the work of inspired artists in a fun, festive environment.

#### The Exhibition at Grafton

**Sun, Aug 26-Thurs, Sept 6, Hunter Gallery of Fine Art & The Old Tavern at Grafton, 802-843-1440**

An exclusive juried art ensemble of original works selected for display and sale in the quintessential New England town of Grafton.

### SEPTEMBER

#### The Exhibition at Grafton

**Sun, Aug 26-Thurs, Sept 6, Hunter Gallery of Fine Art & The Old Tavern at Grafton, 802-843-1440**  
(See above for description.)

#### Outdoor Fine Art Show

**Sat & Sun, Sept 22-23, 10-5, 10 West Main Street, Wilmington**  
(See "August" for description.)

### OCTOBER

#### Weston Antiques Show

**Thurs, Oct 4-Sun, Oct 7, Weston Playhouse, Route 100, Weston, 802-824-5307, westonantiquesshow.org**  
Set in the heart of the Green Mountains at the peak of fall foliage, the Weston Antiques Show has





## STUDIO *tours*



been attracting collectors, dealers, residents, and tourists alike since 1959. Beginning with the gala preview on Thursday evening and continuing through Sunday, this show serves as the anchor for Vermont Antiques Week, which features five shows and 220 dealers within 20 miles. Proceeds benefit historic preservation.

### 37th Annual Newfane Heritage Festival

**Sat & Sun, Oct 6-7, 9-4, Newfane Green, 802-365-9766, [newfaneheritagefestival.org](http://newfaneheritagefestival.org)**

A town fair featuring juried craft show with 80 vendors, live music, children's activities and home-cooked food, including apple pie.

### Harvest Arts & Crafts Show and Oktoberfest

**Sat & Sun, Oct 6 & 7, 9-6, Mount Snow, 12 Pisgah Rd, West Dover, 800-245-7669, [mountsnow.com](http://mountsnow.com)**

34th annual art festival, showcasing fine watercolor paintings, woodwork, fleece, photography, fudge, salsa, kids' crafts and more alongside Oktoberfest (starting at noon) featuring German-style music, food, fun and games.

### Harvest Festival at the Putney School

**Sun, Oct 7, 10-4, Elm Lea Farm, 418 Houghton Pond Road, 802-387-6273, [putneyschool.org](http://putneyschool.org)**

The 72nd annual Harvest Festival will bring local artists, farmers and community organizations together to offer visitors a day of browsing, shopping, and eating, as well as a classical music concert, farm parade, pageantry and games.

### Bears in the Valley Grand Auction

**Sun, Oct 7, Grand Summit Hotel Ballroom, West Dover, 802-464-8092, [bearsinthevalley.org](http://bearsinthevalley.org)**

Wilmington and Dover's Bears in the Valley exhibit culminates in an evening Oktoberfest gala and auction. Participants can enjoy hors d'oeuvres, champagne and a chance to bid on favorite works of art. Reservations are required.

### Weston Craft Show

**Fri-Sun, Oct 12-14, Weston Playhouse, Route 100, Weston, 802-824-3576, [westoncraftshow.com](http://westoncraftshow.com)**

This show features 50 juried Vermont artisans gathered in a beautiful setting, with free parking in the village and a café on site. Crafts include baskets, clothing, jewelry, art glass, sculptures, carvings, pottery and more. View information about each artist on the show's website. Admission fee benefits historic preservation.



## JULY

### Rock River Artists Open Studio Tour

**Sat & Sun, July 21 & 22, 10-6, South Newfane, Newfane, Williamsville, 802-348-7865, [rockriverartists.com](http://rockriverartists.com)**

Visitors of all ages will enjoy the 15th Rock River Artists' Open Studio Tour that will take them through the villages of South Newfane, Williamsville and Newfane to the studios of 24 artists who live there. The tour begins at the historic Old Schoolhouse in South Newfane, where the works of painters, printmakers, photographers, ceramicists, sculptors, metal-workers, and furniture makers will be on display. Visitors then receive a map and choose which studios to visit on the self-guided tour, which meanders around the five-mile radius of the three villages.

## OCTOBER

### Falling Leaves Open Studios

**Sat, Oct 6-Sun, Oct 21, Saxtons River, Westminster West & Putney Area, 802-387-4032**

Nine working craft studios open for public enjoyment during foliage season on various days and times. All studios are within a 12-mile radius.

## NOVEMBER

### Putney Craft Tour

**Fri-Sun, Nov 23, 24, & 25, 10-5, 802-387-4032, [putneycrafts.com](http://putneycrafts.com)**

America's oldest continuous craft tour, now in its 29th year! For a preview, go to [putneycrafts.com](http://putneycrafts.com). There, you'll meet 27 of Vermont's most prominent artists and artisans. You'll find photos of an exceptional array of art and craft, including black-smithing, bookbinding, cheese making, furniture making, glass-blowing, jewelry, metal artistry, photography, polymer art, pottery, sculpture and sculptured tiles, stained glass, weaving, woodworking, and yarn spinning. Each artist's page includes his or her biography and contact information. Better yet, plan to visit.

## DECEMBER

### Cotton Mill Open Studio & Holiday Sale

**Fri & Sat, Dec 7-8, Fri 10-7, Sat 10-5, Cotton Mill Hill, Brattleboro, 802-251-0989, [thecottonmill.org](http://thecottonmill.org)**

More than 50 artists under one roof – furniture, blown glass, trapeze, dance, ceramics, painting, film, music, books, pastries & jam, bodywork. Follow signs from I-91, Exit 1, or from downtown Brattleboro to the Cotton Mill complex.

## Brattleboro's Gallery Walk

**First Friday of every month, 5:30-8:30, [gallerywalk.org](http://gallerywalk.org)**

2007 Gallery Walk dates: July 6, Aug 3, Sept 7, Oct 5, Nov 2, Dec 7

2008 Gallery Walk dates: Jan 4, Feb 1, March 7, April 4, June 6

Celebrated as one of the country's top small art towns, Brattleboro blossoms monthly during Gallery Walk. The year-round, first-Friday event has grown to include 45 to 55 or more venues – most within a four-block radius, others just a short drive from the middle of town. The lively mix of local folks, travelers, students, retirees and children all gathered in town for this one night every month creates an atmosphere of vitality and diversity that is both charming and exciting. Many stops include meet-the-artist receptions and several offer live music.

Start with the Gallery Walk guide, available all around town, which includes listings from participating venues as well as a map. As you connect the dots through town – and beyond – you may discover the secret nooks of a historic structure or traipse down a hidden alleyway to see marionettes in a quaintly reclaimed power station building. Perhaps you'd prefer to enjoy pastoral landscape paintings, see the latest pieces from Vermont photographers or catch a woodworking demonstration. With six separate galleries and seasonally changing exhibits of contemporary work, the Brattleboro Museum & Art Center in the old Union Station is a good bet for the one-stop shopper. Try Windham Art Gallery for thematic exhibits by emerging and experimental artists, Gallery in the Woods for visionary art, Vermont Artisan Designs for a huge and diverse display of regional craft and fine art, and.... Well, there is so much to do, you might need to save some for another day. Luckily, most exhibits remain open throughout the month. Don't forget to relish the local produce and art at the farmers' market on Saturdays in season.

The Gallery Walk guide also includes quality previews, reviews and feature articles about local artists and their work. All articles and venue listings are available at [gallerywalk.org](http://gallerywalk.org).

## Bellows Falls' Art Walk

**3rd Friday of every month, 5-8,**

**[villagesquarebooks.com/3rd\\_friday\\_art\\_walk.htm](http://villagesquarebooks.com/3rd_friday_art_walk.htm)**

2007 Art Walk dates: July 20, Aug 17, Sept 21, Oct 19, Nov 16, Dec 21

2008 Art Walk dates: Jan 18, Feb 15, March 21, April 18, May 16, June 20

Twenty miles north of Brattleboro on the Connecticut River lies the Village of Bellows Falls, which has earned a reputation throughout Vermont and the region as a model of downtown revitalization. With historic architecture, cohesive neighborhoods and the scenic Connecticut River, the arts are thriving. On Art Walk night, the stores stay open later and musicians take to the streets and cafés.

Get your map at Village Square Booksellers, which features an Internet café and a gallery in addition to the bookstore. This Art Walk co-sponsor also hosts readings and lectures, giving the monthly event a distinctive literary flavor. In the summer season, catch the Bellows Falls Farmers' Market, open 3-7 every Friday at the Waypoint Visitor Center.

## Wilmington's Village Stroll, with Bears in the Valley

**Designated Saturdays, 5-8, [visitvermont.com](http://visitvermont.com) or**

**[bearsinthevalley.org](http://bearsinthevalley.org)**

2007 Village Stroll dates: July 14, Aug 11, Sept 22

**CAUTION:** There have been an alarming number of bear sightings along Routes 9 and 100 in the Mount Snow Valley this year. Strangely enough, all the bears appear to be completely motionless and ... beautifully painted. Local authorities have cautioned art lovers to pull off the road before attempting to view or photograph these gorgeous specimens of Vermont artistry. All visitors to the area should check [bearsinthevalley.org](http://bearsinthevalley.org) for late-breaking news regarding this fascinating cultural development in the towns of Wilmington and Dover.

Twenty miles to the west of Brattleboro, the Deerfield River bubbles happily through the festive little village of Wilmington, where historic wooden buildings, mostly built in the 1800s, line the two main streets. In the summer, the streets are decorated with flowers, and there's always a cool breeze. For a small village of some 30 or 40 shops, Wilmington has impeccable taste, supporting a number of art galleries, wonderful home design shops, clothing stores and restaurants. It has always been a friendly place to shop, and now, on designated Saturdays, it will be even friendlier – the stores will stay open until 8 p.m. for Wilmington's Village Stroll, and the restaurants will feature jazz and acoustic music. While you are in the area, explore the historic and peaceful town of Dover, featuring the Art on the Mountain Gallery at the Deerhill Inn as well as exciting opportunities for leisure activities on Mount Snow – and beyond.



Visitors are welcomed with traditional New England hospitality— but remember to call ahead. Hours may be subject to seasonal changes.



“Even first-time visitors to Bellows Falls say it feels like they’ve come home.”

VermontVacation.com

See also Bellows Falls’ Art Walk

### The Blue Moon Studio Photography

33 Bridge Street, 802-463-9333 (Open by appointment) Slide color images printed on watercolor paper and cibachrome prints; watercolor and oil paintings by local artists.

### Coyote Moon Jewelry & Imports

22 Rockingham Street, 802-651-1004 (Open Mon-Sat 12-5:30) Sterling silver jewelry from Mexico and handcrafted imports.

### The Exner Block Gallery, Rockingham Arts & Museum Project

9 Canal Street just off The Square, 802-463-3252, ramp-vt.org (Open Mon-Sat 10-5 & by appointment) Unique galleries and shops in a historically renovated building on the Canal in downtown Bellows Falls. The not-for-profit gallery offers an array of fine art, sculpture, artisan crafts, antiques and gifts.

### The Framery of Vermont

22 Bridge Street, 802-463-3295, (Open Mon-Fri 10-5:30, Sat 10-4) Features the work of artist/owner Donna Lund among other local and regional artists.

### Great River Arts Institute

33 Bridge Street, 802-463-3330, greatriverarts.org (Office open Mon-Thurs 9:30-4:30 or by chance, studios open on the weekend) Occasional student and faculty gallery shows (open to the public). Offers intensive workshops in literary and visual arts for adults and a school outreach program for children.

### Hunter Studio

30 Village Square, 802-463-3669, hunter-studio.com (Open by appointment) Working studio of oil painter Charles Hunter.

### Maplewing Artisans

7 Village Square, 802-460-4161 (Open seven days 10-6 May-Oct; Thurs-Mon 10-6 Nov-Apr; & by appointment) Featuring many local artists, with pieces that include functional and fine art; unique gifts.

### The Richter Gallery

3 Westminster Street, 802-463-2049, athensantiqueprints.com (Open Tues-Fri 10-5, Sat 10-2 & by appointment) Antique prints, antique lighting, custom framing, pottery and furniture; abstract art of Stephen Zeigfinger.

### The Rock & Hammer

26 The Square, 802-463-2289, (Open Mon-Thurs 9-5, Fri 9-6, Sat 9-4) Crafters of fine jewelry.

### Village Square Booksellers

32 The Square, 802-463-9404, villagesquarebooks.com (Open 7 days: Mon-Thurs 9-5, Fri 9-6, Sat 9-4, Sun 10-3) Features frequent readings and lectures in addition to the gallery and bookstore.



“One of the Top 25 Small Art Towns in the Country” American Style Magazine 2006

For a more comprehensive listing of Brattleboro art venues, see gallerywalk.org.

### A Candle in the Night

181 Main Street, 802-257-0471, acandleinthenight.com (Open Mon-Sat 10-6, Fri till 8, Sun 12-5) Oriental rug and furniture gallery featuring the works of regional and international artists and artisans.

### All Souls Church

29 South Street, enter driveway across from fire station, West Brattleboro, 802-254-9377 (Open Mon, Wed & Thurs 9-1 & during worship services and other public events) Monthly and bimonthly shows of work by area painters, photographers and fabric artists.

### Altiplano

42 Elliot Street, 802-257-1562 (Open 10-6 daily, Fri 10-7, Sun 11-5) Altiplano’s own designs as well as locally crafted and quality “fair-traded” products from international artisans and crafts cooperatives.

### American Traders

257 Marlboro Road, West Brattleboro (Open daily 10-5:30, weekends till 6) Wooden canoes, refurbished canoe motors, plus sturdy furniture, art, Adirondack lamps, folkart fish carvings and hand-riven Windsor chairs.

### Amy’s Bakery Arts Café

113 Main Street, 802-251-1071 (Open Mon-Sat 8-6, Sun 9-5) Founded as a bakery-café within a gallery space, Amy’s features European-style breads; soups, sandwiches and salads; specialty cakes, cookies, and other treats along with fine art exhibits that change monthly and a river view from the back café.

### The Artist’s Loft Fine Art Gallery

103 Main Street, 3rd Floor, 802-257-5181, theartistsloft.com (Open Mon-Sat 10-6) Changing exhibits and affordable art prints by New England artists, featuring the work of William Hays, one of New England’s finest portrait and landscape painters. The Artist’s Loft is also a cozy bed & breakfast in the heart of downtown Brattleboro.

### Asian Cultural Center & C.X. Silver Gallery

814 Western Ave., 802-257-7898, cxsilvergallery.com (Open Sat, Sun and holiday Mondays 12-6 & by appointment) Housed within the C.X. Silver Gallery, the Asian Cultural Center of Vermont hosts frequent festivals, lectures and educational activities that explore and celebrate a multitude of Asian cultures. The gallery features paintings, silkscreens, and three-dimensional



works by many local artists, including luminous landscapes by gallery co-owner Cai Xi Silver. A small shop features imported Chinese trinkets and decorations.

### Natalie Blake Studios

74 Cotton Mill Hill, A330, 802-254-9761, [natalieblake.com](http://natalieblake.com) (Visitors welcome; call ahead. Seconds available in display area) Original works in porcelain, hand-thrown vessels, hand-built porcelain lids in bronze glaze with sgraffito carving, glazed in luminous matte gem tones.

### Blue Moose and Café Lotus

29 High Street, 802-246-2000 for the store, 802-254-6245 for the café (Open Mon-Fri 8-6, Sat 9-5; store open Sun 11-5) Innovative gifts and home accessories, and casual dining with an international flair (free wi-fi is available with purchase) as well as art exhibits that change monthly.

### Borter's Jewelry Studio

103 Main Street, 2nd floor, 802-254-3452, [bortersjewelry.com](http://bortersjewelry.com) (Open Tues-Fri 12-5:30) Designer, lapidary, goldsmith and silversmith Robert Borter creates one-of-a-kind treasures.

### Brattleboro Museum and Art Center

10 Vernon Street, 802-257-0124, [brattleboromuseum.org](http://brattleboromuseum.org) (Open six days 11-5, closed Tues) Seasonally changing exhibits in six separate galleries featuring work by a variety of regionally and internationally acclaimed artists. Contemporary sculpture, paintings, prints, silk-

screens, quilts, illustrations and/or installation pieces – plus a gift shop and hands-on activities for families. In the main gallery through Aug 5, see large-scale abstract work; then, Aug 11 through Nov 25, "From Street to Studio," which traces the development of artists who worked in the NYC East Village art scene in the 1980s, including Keith Haring, Jean-Michel Basquiat and others. See the website for exhibit and admission details.

### Brattleboro Clayworks

532 Putney Road, 802-254-9174, [brattleboroclayworks.com](http://brattleboroclayworks.com) (Open Fri & Sat 10-5. Additional hours by appointment or chance) A wide variety of professional quality works, including functional pots, sculpture and tile work, and large, ornamental garden pieces for home or gift giving, all at affordable prices.

### Brooks Memorial Library

224 Main Street, 802-254-5290, [brooks.lib.vt.us](http://brooks.lib.vt.us) (Open Mon-Wed 10-9, Thurs-Fri 10-6, Sat 10-5; Sat 10-1 in the summer months) Public art and crafts displays by regional professionals and student artists change monthly.

### Catherine Dianich Gallery

139 Main Street, off alleyway foyer of Hooker-Dunham Building, 802-254-9076, [catherinedianichgallery.com](http://catherinedianichgallery.com) (Open Wed-Sat 10-3 & by appointment) Established and emerging contemporary artists working at the regional, national and international levels.

### Gallery in the Woods and Dante's Infurniture

145 Main Street, 802-257-4777, [galleryinthewoods.com](http://galleryinthewoods.com) (Open Mon-Sat 11-5:30, Sun 12-5) Visionary art, surrealist art and fine craft by artists from around the country and world.

### Lesley Heathcote

802-257-0951, [lesleyheathcote.com](http://lesleyheathcote.com) (Open by appointment) Oil paintings and pastels that focus on animals and nature.

### Hooker-Dunham Theater & Gallery

139 Main Street, 802-254-9276, [hookerdunham.org](http://hookerdunham.org) Fine regional art on view during performances at the theater or by appointment or chance.

### In-Sight Photography Project

45 Flat Street, Suite 1, 802-251-9960, [insight-photography.org](http://insight-photography.org) (Open Mon-Fri 10:30-6) Works by students and others, classes for teens 11-18.

### Li Pon är'-te-fakt's

44 Harmony Place (off the parking lot entry to Backside Café), 802-257-8017 (Open daily till 6) One-of-a-kind clothing and bags designed and handmade by owner Linda Pon Owen. Plus an array of handcrafted jewelry, blown glass and other treasures.

### Sharon Myers Sculpture Studio

83 Western Ave., 802-254-2480 (Open by appointment) Portrait busts in clay.

### Neumann Studios

30 Strand Avenue, 802-251-9901, [neumannstudios.com](http://neumannstudios.com) (Open by appointment) Heirloom-quality stained glass. Full-service studio offering custom stained-glass windows, kiln-fired paintwork, antique glass and etching. Restoration services available.

### Janet Picard Studio

Route 9, West Brattleboro in the red shed behind the Chelsea Royal Diner, 802-257-1098, [picardart.com](http://picardart.com) (Open Fri, Sat, Sun 11-5, or by chance or appointment) Open working studio featuring Picard's boldly colored works mixing reality and abstractions.

### Renaissance Fine Jewelry & Gallery

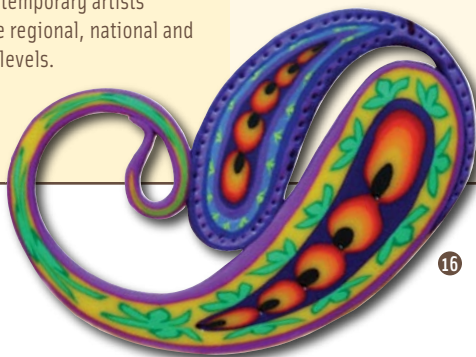
141 Main Street, 802-251-0600 (Open Tues-Fri 10:30-6, Sat 10-4) A family-owned jewelry store and art gallery specializing in handmade, custom and designer collections.

### Rueter Woodworking & Gallery

154 Elliot Street, 802-579-9309, [rueterwoodworking.com](http://rueterwoodworking.com) (Open Wed-Sat 12:30-5:30 & by appointment) Fine cabinetry and smaller joined and turned pieces.

### Solinglass Studios

141 Main Street, 802-251-0600 (Open Tues-Fri 10:30-6, Sat 10-4) Gallery space for glassblowing and viewing.



### Susan Berry Taylor Studio

14 Elliot Street, 413-652-4982  
(Open Wed-Sat 12-6 – but call ahead to confirm)

Susan's work has been described as simultaneously impressionistic and expressionistic. Her passion is depicting the drama of life, synthesizing body-mind-spirit in her works.

### Through the Music Gallery & Studio

2 Elliot Street (out back at Turn It Up!), 802-299-7869, [myspace.com/throughthemusicgallery](http://myspace.com/throughthemusicgallery)  
(Open most days – call for hours)

Cutting-edge work by emerging local painters, photographers and others.

### Vermont Artisan Designs

106-110 Main Street, 802-257-7044, [buyvermontart.com](http://buyvermontart.com) (Open Mon-Wed 10-5, Thurs & Sat 10-6, Fri 10-7, Sun 11-4) The works of more than 350 American craftspeople. Upstairs is Gallery 2, featuring paintings, photographs and sculpture in a number of individual galleries.

### Vermont Center for Photography

49 Flat Street, 802-251-6051, [vcphoto.org](http://vcphoto.org) (Open Fri 2-7, Sat & Sun 12-5) Fine art photography with a new feature exhibit each month, plus ongoing workshops, artist talks and more.

### Windham Art Gallery

69 Main Street, 802-257-1881, [windhamartgallery.com](http://windhamartgallery.com) (Open Thurs-Sun 12-5 & by appointment) The 2007 season includes a variety of themed group exhibits, including writer-artist collaborations, abstract pieces and works featuring animals.



"One of the ten most beautiful places in America" USA Weekend

### Gallery North Star

151 Townshend Road, 802-843-2465, [gnsgrafton.com](http://gnsgrafton.com)  
(Open six days 10-5, Tues by chance) Celebrated as one of Vermont's premier fine art galleries exhibiting works by more than 25 of New England's finest artists.

### Jud Hartmann Gallery

6 Main Street, 802-843-2018, [judhartmanngallery.com](http://judhartmanngallery.com) (Open 7 days 10-5, mid-September through the holidays & by chance or appointment through Memorial Day) This fine art gallery features a unique series of limited-edition bronze sculptures entitled "The Woodland Tribes of the Northeast," as well as watercolors by William Bracken and others.

### Hunter Gallery of Fine Art

74 Main Street, next to the Old Tavern, 802-843-1440, [hunterartworks.com](http://hunterartworks.com) (Call for hours) The works of resident artist Peter Jeziorski and other acclaimed local and national artists.

### Vermont Botanical

802-843-2304, [vermontbotanical.com](http://vermontbotanical.com) (Open by appointment) Pressed-flower portraits created from specimens gathered in Vermont and further afield by Maggie Lake, with custom hardwood frames by Tracy Lake.

17



"Jamaica has maintained the charm and character of Vermont. Hiking trails and back roads intersect the village center, where a leisurely pace and casual atmosphere beckon visitors to slow down and enjoy the day." Virtual Vermont

### Charles Gardiner, Antiques

Routes 30 & 100, 802-874-4009 or 978-827-3079, [charlesgardinerantiques.com](http://charlesgardinerantiques.com) (Open mid-May – mid-October by appointment) Old things, out of fashion, suitable only for a seasonal country retreat.

### Elaine Beckwith Gallery

3923 Route 30, 802-874-7234, [beckwithgallery.com](http://beckwithgallery.com) (Open 6 days 10-5:30, closed Tues) Fine art gallery representing more than 30 artists showing original paintings, sculptures and artist-pulled prints.

### Jennie Blue

Route 30, in the village, 802-874-4222, [jennieblue.com](http://jennieblue.com) (Open 5 days 9:30-5:30, Tues & Wed by chance) Gifts and whimsical, colorful pottery and more.

### Margie's Muse Hand Weaving & Gallery

Route 30, 802-874-7201, [margiesmuse.com](http://margiesmuse.com) (Open Thurs-Mon 10:30-5:30) Handmade

creations of more than 100 artisans and crafters.

### Monsoon Marketplace

Main Street, Jamaica House, 802-874-4149, [monsoonvt.com](http://monsoonvt.com) (Open by complete coincidence) These "two gals in a hot pink wood shed in Vermont" focus on style, social justice and works that have a transformative effect on the artists who produce them.

### Nancy Price Gallery

3751 Route 30, 802-874-4489, [nancypricegallery.com](http://nancypricegallery.com) (Open Wed-Sun 10-6 & by appointment) Offering "a respite from the stresses of après-ski life," the gallery features work by 27 painters, sculptors and other artists.

### Skip Woodruff, Rustic Furniture Maker

Routes 30 & 100, 802-874-4172, [jamaicavt.com](http://jamaicavt.com) (Open year-round. Summer/Fall: Wed-Mon 10-5; Winter/Spring: Weekends 10-5; or by chance) Adirondack lodge and great camp-style furniture.

### Wildernest

Route 30, about 2 miles north of Jamaica Village, 802-874-4532, [jamaicavt.com](http://jamaicavt.com) (Open 9-5 Fri-Mon; other weekdays by chance) A selection of distinctive Vermont gifts and crafts.

18



19



20



21



*"The perfect family retreat—rural character with a wide array of charming country inns, fine shops, galleries and restaurants"*  
FamilyTravelFiles.com

### Adams Farm Quilt Loft

15 Higley Hill Road,  
Wilmington, 802-464-3762,  
[adamsfamilyfarm.com](http://adamsfamilyfarm.com) (Open  
year-round Wed-Sun 10-5)

Handmade local quilts are on display and for sale in the quilt loft—plus year-round public activities.

### Applewoods Studio & Gallery

Route 9, Marlboro, 802-254-2908  
(Open summers Thurs-Mon 10-4; other seasons by appointment)

Specializing in tables and benches, made from local hardwood burl and spalted woods.

### Art of Humor Gallery & Guests

3 miles from the Wilmington Village and 1 mile from Route 9, Wilmington, 802-464-5523,  
[skipmorrow.com](http://skipmorrow.com) (Open by appointment) The work of cartoonist Skip Morrow, who first won international acclaim with his best selling "I Hate Cats" book series in 1980.

### Austin's Antiquarian Books

123 West Main Street,  
Wilmington, 802-464-8438 or  
800-556-3727, [austinsbooks.com](http://austinsbooks.com)  
(Open daily 10:30-6; closed Tues-Thurs during April and Nov) Books, antique prints and maps provide hours of entertainment.

22



23



24



### Crafts Haus Arts & Crafts Gallery

54 Top of the Hill Road,  
Wilmington, 802-464-2164,  
[visitvermont.com/art.html](http://visitvermont.com/art.html) (Open  
Thurs-Mon 10-5, mid-June to  
early Nov) Features famous folk  
artist Will Moses, original paintings  
and prints by local artists, hand-craft-  
ed jewelry and pottery items.

### Deerhill Inn, with Art on the Mountain Gallery

Valley View Road in West Dover,  
just up the hill from Route 100,  
802-464-3100, [deerhill.com](http://deerhill.com)  
(Gallery open weekdays 9-5, or  
by appointment; restaurant open  
6-9, closed Wed) Paintings, jew-  
elry, quilts and other crafts by local  
artists in a lovely inn setting. Exhibits  
change seasonally.

### Earth Rock & Oils

3 South Main Street, Wilming-  
ton, 802-464-7319, [newengland-  
gemstones.com](http://newengland-<br/>gemstones.com) (Open weekends  
12-5) Fine gems from New England  
mines: emerald green fluorite,  
aqua-marine and quartz; pendants  
and earrings.

### Gallery Wright Sticks & Stones Studio

3 South Main Street,  
Wilmington, 802-464-9922,  
[gallerywright.com](http://gallerywright.com) (Open week-  
ends 12-5 & by appointment)  
Showcases a fine selection of original  
art, including oils, pastels and  
etchings of landscapes, still life and  
figures. Also view the print-making  
process with artist-in-residence  
Mary Wright, working on a large  
etching press.

### McGrath Fine Art Gallery

4 North Main Street, 2nd floor,  
Wilmington, 802-464-1339,  
[mcgrathgallery.com](http://mcgrathgallery.com) (Open Mon-  
Fri 11-5, Sat & Sun 11-8)

Display and sale of mostly vertical  
and hanging art, including McGrath's  
award-winning, light-infused oil  
landscapes, in addition to some  
sculpture as well as oriental carpets.  
Different artists featured monthly.

### Norton House

30 West Main Street, Wilming-  
ton, 802-464-7213, [norquilt.com](http://norquilt.com)  
(Open seven days 9-5)

A "quilter's paradise," plus country  
store in a charming 1760 New England  
house on the National Register of  
Historic Places.

### Quaigh Designs

11 West Main Street, Wilming-  
ton, 802-464-2780 (Call for  
hours) The works of Mary Azarian  
and Sabra Field are among the 50  
New England artists displayed in this  
historic house-turned-gallery.

### Snow Mountain Jewelry

111 West Main Street, Wilming-  
ton, 802-464-5329 (Open daily  
10-6) A wide selection of jewelry  
and accessories for every taste.

### The Spiral Shop & Gallery

1624 Route 9, Marlboro,  
802-257-7529, [masonscreations.com](http://masonscreations.com)  
(Call for hours) Stained  
glass, garden sculptures, metal  
sculptures, statuary and much more.

### Stone Soldier Pottery

64 Gates Pond Road, Jackson-  
ville, 802-368-7077, [stonesol-  
dierpottery.net](http://stonesol-<br/>dierpottery.net) (Open 7 days,  
Mon-Sat 10-5, Sun 12-5)

25



Hand-decorated dinnerware collections, and other decorative and functional pieces.

### Matthew Tell Pottery

163 Potters Hill, Marlboro  
802-254-8057,  
matthewtellpottery.com  
(Open by appointment & during studio tour) Functional wood-fired pottery for serving, flower arrangements, and the garden.

### Town Hill Pottery

726 Town Hill Road, Whitingham, 802-368-2807,  
townhillpottery.com (Open by appointment & during two special studio weekends) Houses the studios of Aysha Peltz and Todd Wahlstrom, with two unique styles of work. Open studio Memorial Day and Thanksgiving weekends.

### William Holland Drury Jr. Gallery

Marlboro College, South Road, Marlboro, 802-257-4333,  
marlboro.edu/community/events/drury\_gallery/ (Open Sun-Fri 1-5 when the college is in session, no summer hours) Exhibits include work by regional and national artists in all media.

### Young & Constantin Gallery

10 South Main Street, Wilmington Village, 802-464-2515 (Open Fri 12-6, Sat 11-6 & Sun 10-5; extended summer hours) Contemporary hand-blown glass, fine art and photography by New England artists, distinctive jewelry, antique Chinese furniture and unique giftware.



Writers, artists and craftspeople flock to this quaint village. More than 60 artists are living and working in the area. Don't miss the 29th Annual Putney Craft Tour and Falling Leaves Open Studios. See [putneycrafts.com](http://putneycrafts.com) for a more complete list of Putney artists.

### Bissell Fine Woodworking

150 Signal Pine Road, 802-387-4416,  
bissellwoodworking.com (Open Mon-Fri 8-4:30, Sat & Sun by appointment) Shaker, Mission and custom furniture, and Windsor chairs.

### Brandywine Glassworks

3 Great Meadows Ridge (corner of Fort Hill Road), 802-387-4032,  
robertburchglass.com (Open by appointment & during fall studio tours) Hand-blown vases, paper weights, perfume bottles, lamps and one-of-a-kind commissioned pieces. Glass-blowing lessons available.

### Ian Eddy Blacksmith Studio

14 Pleasant Valley Road, Saxtons River (a 20-minute drive from Putney), 802-869-2828,  
ianeddyblacksmith.com (Open by appointment & during fall studio tours) Hand-forged items designed to be attractive and delicate in concept yet practical in function.

### Edel's Stained Glass Studio

88 Main Street, 802-387-2115,  
edelbyrne.com (Open by appointment & during fall studio tours) Stained-glass panels and candleholders in a medieval style.

### Dena Gartenstein Handwovens

248 Old Coddling Road, 802-387-2656 (Open by appointment & during fall studio tours) Rayon chenille scarves and shawls, light-weight iridescent tencel scarves, and custom pieces.

### Green Mountain Spinnery

7 Brick Yard Lane, just after Exit 4 from I-91N, 802-387-4528 or 800-321-9665, spinnery.com (Open Mon-Fri 9-5:30, Sat 10-5:30, Sun 12-4) Natural fiber yarns, blends of fine wool with precious fibers such as mohair, alpaca, organic cotton and lyocell.

### Judy Hawkins Studio

3506 Westminster West Road, 802-387-4854,  
judyhawkinspaintings.com (Open by appointment & during fall studio tours) Works inspired by New England landscapes and the vastness of the Southwest.

### Jelly Bean Tree

Main Street, Saxtons River (same entryway as Main Street Arts, a short drive from Putney), 802-869-2960, mainstreetarts.org (Call for hours) The work of more than 50 local craftspeople, with displays that change monthly.

### Carol Keiser Studio

338 Hickory Ridge Road, 802-387-5774, arttilestudio.com (Open by appointment & during

fall studio tours) Nationally known artist who paints on both tile and canvas.

### Lilli Crites Pottery

2888 Westminster West Road, Westminster West, 802-387-2222 (Visitors welcome; call ahead) Elegant but functional wheel-thrown forms, with lively patterns showing through brilliant glazes.

### Michael S. Currier Center at The Putney School

Elm Lea Farm, 418 Houghton Brook Road, 802-387-7312,  
putneyschool.org/currier/index.html (Open 7 days 9-9) Work by national and regional artists is exhibited in this 14,000 square feet of gallery space.

### Offerings Jewelry

Putney Village, a few doors left of the General Store, 802-387-4566,  
offeringsjewelry.com (Open Mon-Sat 10-6, Sun 11-5) Artisan jewelry, watches, gifts, cards and other treasures.

### Ken Pick Pottery

187 Westminster Road, 802-387-5995, putneycrafts.com/pick.htm (Open by appointment and during fall studio tours) Colorful, functional and sculptural stoneware.

### Susan Samitz Polymer Clay Jewelry

211 East Putney Brook Road, 802-387-2352 (Open by appointment and during fall studio tours) Colorful hand-sculpted jewelry made of polymer clay.





29



30



31

### Nancy Storrow Studio

139 Plowden Road,  
802-387-5740, [nancystorrow.net](http://nancystorrow.net)  
(Open by appointment) Abstract-  
tions of botanical and natural forms.

### Wendy Wilson

Hickory Ridge Road,  
802-387-2336, [putneycrafts.com/  
wwilson.htm](http://putneycrafts.com/wwilson.htm) (Open by appoint-  
ment & during fall studio tours)  
Both functional and sculptural turned  
wooden pieces.

### Penelope Wurr Gallery

12 Kimball Hill, 802-579-5130,  
[penelopewurr.com](http://penelopewurr.com) (Open Fri &  
Sat 10-6, Sun, Mon & holidays  
11-5 & by appointment) Fine  
contemporary glass and an eclectic  
range of furnishings for the interior  
and garden.

### Village Arts of Putney Gallery

Putney Inn, just off Exit 4 of  
I-91, 802-387-5517 (Open seven  
days, 7:30am-10:30pm, Fri &  
Sat till 11) Savor this marriage  
of fine art and exquisite cuisine!  
VAP Gallery features works of art by  
renowned artists and master teachers  
Richard Schmid, Nancy Guzik, The  
Putney Painters and Friends. Artists  
in Residence Days offered at the Inn  
twice a month.

### Village Arts of Putney Studio

114 Westminster Road, 3/4 mi.  
up from Putney General Store,  
802-282-2539 (Open by appoint-  
ment) A fine arts education center  
where master and professional instruc-  
tors from the region offer high-quality  
art education classes, workshops and  
painting groups for adults and children.



*"The West River Valley, boasts a  
number of superlatives. It's home  
to the Rock River Studio Tour,  
and the longest covered bridge  
in Vermont. The entire village  
of Newfane is on the National  
Register of Historic Places.  
The Newfane Flea Market is the  
largest in New England. It's "truly  
unspoiled Vermont."  
[ThisIsVermont.com](http://ThisIsVermont.com)*

### Paul Bowen, Sculptor

802-348-9910, [paulbowen.com](http://paulbowen.com)  
(Open by appointment & during  
studio tour) Sculptures from found  
wood and other materials.

### Kimberly Hartman Colligan, Printmaker

Newfane, 802-365-7317 (Open  
by appointment & during studio  
tour) Incorporating many  
techniques, including drypoint,  
collograph, and etching, with imagery  
developing from layering color,  
texture and line.

### Crowell Art Gallery at the Moore Free Library

23 West Street, Newfane Village,  
802-365-7948, [newfanevt.com](http://newfanevt.com)  
(Open Tues-Fri 1-5, Sat 9-1)  
Changing exhibits from March-Nov;  
permanent exhibit Dec-Feb. The per-  
manent exhibit features artists from  
southeastern Vermont, including Wolf  
Kahn, Emily Mason, Jim Urbaska and  
others. The changing exhibits vary,  
but also feature southern Vermont

artists or others with a connection to  
the area.

### Dan DeWalt Cabinetry

South Newfane, 802-348-7701  
(Open by appointment & during  
studio tour) Fourth-generation  
cabinetmaker specializing in custom  
furniture and design as well as  
antique restoration.

### Richard Foye Raku Pottery

South Newfane, 802-348-7927  
(Open by appointment & during  
studio tour) Raku-fired pottery  
made with crackle and luster glazes  
on ornamental, classical shapes.

### John Long Wood Sculpting

239 Wiswall Long Road, New-  
fane, 802-365-7360 (Open by  
appointment & during studio  
tour) Wall sculptures from a palette  
of weathered barn woods.

### Mystic Metallurgy

802-348-7306,  
[mysticalmetals.com](http://mysticalmetals.com) (Open by  
appointment & during studio  
tour) Creative blacksmithing,  
including sculpture, gates, railings,  
hearth metals, furniture and more.

### Newfane Country Store

Route 30, Newfane Village,  
802-365-7916,  
[newfanevillage.com](http://newfanevillage.com)  
(Open Mon-Thurs 10-5, Fri-Sun  
10-5:30) An old-fashioned country  
store with hand-painted pottery  
depicting the Newfane Village, plus  
quilt rooms featuring quilts from local  
Vermont crafters, as well as Amish  
quilters and some imports.

### Walter Rapp, Wood and Iron Work

134 South Wardsboro Road,  
Newfane, 802-365-9112 (Open  
by chance or appointment &  
during studio tour) Specializing  
in early American-style tables, signs  
and weather vanes.

### Lauri Richardson Mosaics

802-348-7823 (Open by  
appointment only) Mosaic sculp-  
tures and story plaques.

### Deidre Scherer

Williamsville, 802-348-7807  
(Open by appointment & during  
studio tour) A distinctive narrative  
approach, in fabric and thread, using  
scissors and sewing machine as draw-  
ing tools.

### Schommer Antiques & Art

Route 30, Newfane Village,  
802-365-7777 (Open daily,  
May-Oct, 10-5, all year by  
appointment) Gallery and furni-  
ture, mostly 19th century, including  
a wide range of accessories. Table  
settings a specialty.

### Still Water Bindery

Route 30, Newfane, 802-365-411,  
[stillwaterbindery.com](http://stillwaterbindery.com) (Open by  
appointment) Specializing in  
wedding albums and etui.

### Taft Hill Collection

1096 Route 30, Townshend,  
802-365-4200, [tafthill.com](http://tafthill.com)  
(Open daily 10-5) A fine art  
gallery within a gift shop, showing  
diverse works primarily by West River  
Valley artists.

### Three Dot Pottery

181 Vermont Route 30, Newfane,  
802-365-7288,

[newfanevermontusa.com](http://newfanevermontusa.com)

*(Open daily 10-4, by appointment & during studio tour)*

Pottery studio & gallery with functional stoneware and unique gifts.

### Christine Triebert Photography

South Newfane, 802-348-7440,  
[rockrivereditions.com](http://rockrivereditions.com) *(Open by appointment & during studio tour)*

Custom, toned landscape and still-life images are imbued with a sense of timelessness and harmony.

### Mary Welsh & Roger Sandes

Williamsville, 802-348-7865

*(Open by appointment & during studio tour)* Collages, paintings, and prints.



Weston is centered on a village green complete with bandstand. There are a number of shops to visit, including the famous Vermont Country Store. The Weston Playhouse Theatre Company, Vermont's oldest professional theater, is located on the Village Green.

### The Museums of Weston

At the center of town,  
802-824-5294 *(Open Wed and weekend afternoons in season; see details below. Special touring arrangements available by appointment)* 18th Century Farrar-Mansur House Museum is filled with authentic local heirlooms. Guided

tours are offered Wed 1-5, and weekends 1-4 from July 2 through Labor Day, and from 1-5 on September weekends and the first two weekends in October. The exterior features of the Old Mill Museum (water wheel and waterfall, turbines and sawmill) may be visited anytime. Guided tours of the Mill's interior, featuring grist mill grinding demonstrations and the antique tool collection, will be offered from 1-5 on Weds, 10-4 on Sat & 1-4 on Sun from July 2 to Labor Day. The Mill will also offer guided tours on September weekends and the first two weekends in October. The Weston Cornet Bandwagon may be visited when either museum is open for tours.

### Village Green Gallery

661 Main Street, 802-824-3669

*(Open six days, closed Tues)*

Vermont images by Wayne NT Fujii (Nobushi), select handcrafts by some of Vermont's finest artists and a coffee bar with wi-fi access and Mocha Joe's fair trade organic coffees, organic teas and homemade pastries.

### Whales in Vermont Gallery

Right behind the Inn at Weston  
at the end of Mill Lane,

802-824-3604, [wickahrens.com](http://wickahrens.com)

*(Open most days; call ahead)*

Gallery of renowned whale artist Wick Ahrens exhibits a unique and exquisite collection of animal and wildlife art, featuring more than 20 nationally known wildlife artists and Wick's famous whale sculptures and carvings.



35



32



33



34

# Small towns of Windham County make great art!

Toll free 1-877-VTSBEST or  
**SOUTHERNVERMONT.COM**  
Your Vermont

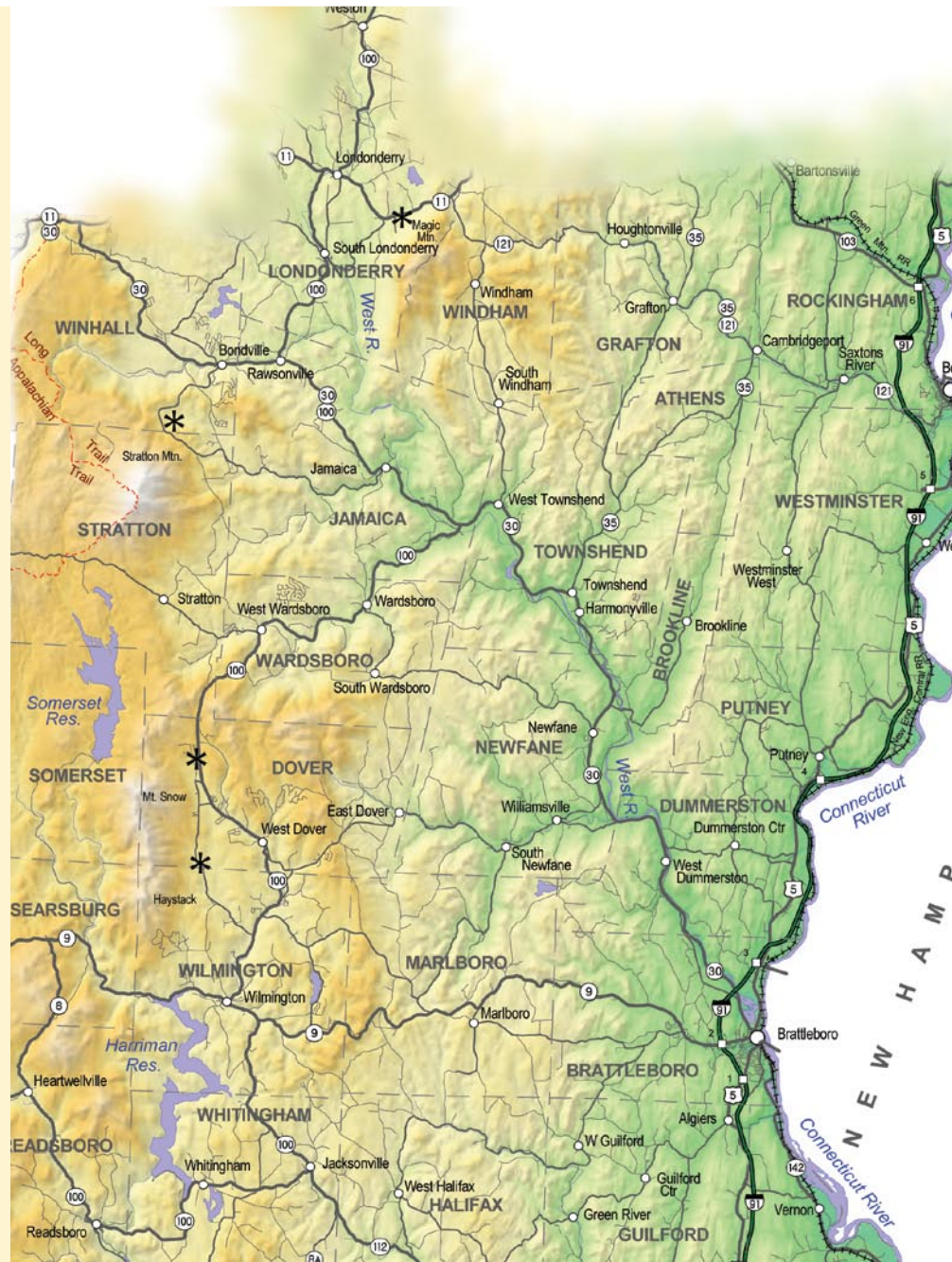
## List of artists featured

Cover: feature image: Judy Hawkins

Top inset: Edel Byrne Bottom inset: Robert Burch

- 1 Doug Beekman
- 2 Roger Sandes
- 3 Carol Keiser
- 4 Linda Striedieck
- 5 Alice Freeman
- 6 Roger Sandes
- 7 Caitlin Burch
- 8 Jon Isherwood
- 9 Sylvia Jones
- 10 Brian D. Cohen
- 11 Ro Ladd
- 12 Roger Sandes
- 13 Dena Gartenstein
- 14 Hagop Keledjian
- 15 Judy Hawkins
- 16 Susan Samitz
- 17 Susan Samitz
- 18 Caryn King
- 19 Paton Miller
- 20 Mary Welsh
- 21 Penelope Wurr
- 22 Robert Burch
- 23 Green Mountain Spinners
- 24 John Ewald
- 25 Jeanne Bennett
- 26 Susan Jarvis
- 27 Richard Foye
- 28 Kim Hartman Colligan
- 29 David Mischke
- 30 Richard Schmid
- 31 Lillie Crites
- 32 Ellen Darrow
- 33 Patricia Johnson
- 34 Christine Triebert
- 35 Ken Pick glazing

Back cover inset: Carlene Raper



**PRODUCED BY** Primetime Concepts, Inc. for the Southern Vermont Regional Marketing Program. **GRAPHIC DESIGN:** Jessica Butterfield.

**EDITING:** Joy Wallens-Penford and Paula Melton. **SPECIAL THANKS** to the all of the artists and galleries that provided images.

**FUNDED IN PART BY** the Southern Vermont Regional Marketing Program. **PRINTED BY** Springfield Printing Corporation, North Springfield, VT.